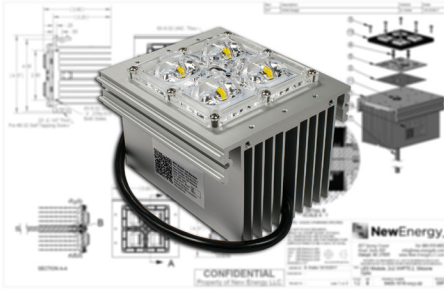


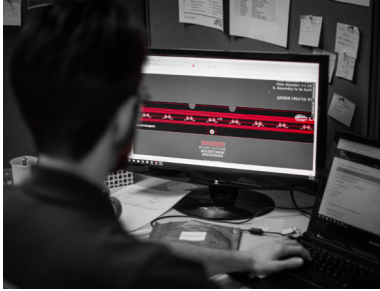
## Engineering Lab Capabilities

### Lean & Fast. Made Smarter.

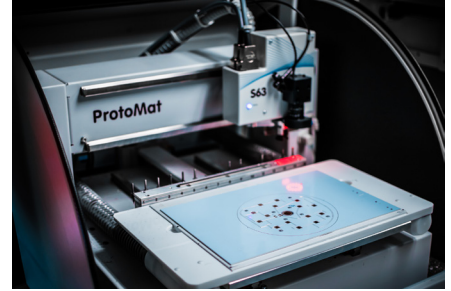
NewEnergy operates facilities globally with ISO certifications for the LED lighting, automotive and medical industries. Our North Carolina based office provides quick engineering & sales support with an R&D lab for prototype development and custom solutions. Our in-house global manufacturing capabilities allow for both building in the United States as well as overseas at scale.



Mechanical 3D drawings are first created to clearly convey design concepts



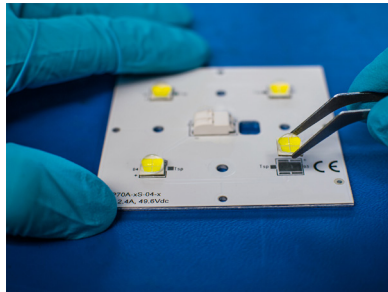
Electrical schematics and Gerbers are made once design is approved in preparation of PCB fabrication



Rapid PCB prototypes are created with our in-house PCB Router with max PCB size of 9"x12"



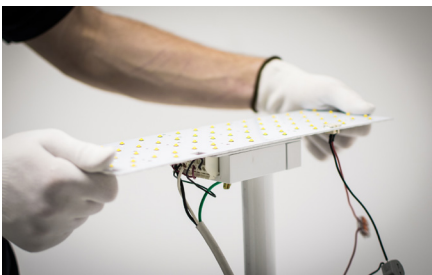
Solder is dispensed onto the PCB that will bind electrical components to the board



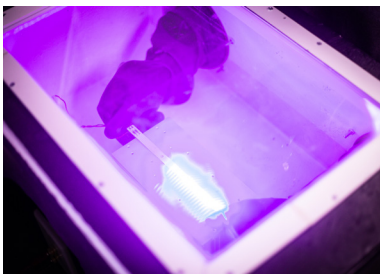
Electrical components are hand placed onto the PCB and solder is melted on our hot plate to complete the circuit board assembly



Final assembly is completed with optics, heatsinks, drivers or any additional components needed



Lighting products are tested in our 2 Meter Integrating Sphere to measure luminous output & color data to evaluate the design



UV specific testing is done in our custom chamber for applications such as hospital sterilization, air purification, food processing and horticulture.

### About NewEnergy

NewEnergy accelerates the adoption of LED technology through simple, modular products and custom designs. Through 30 years of experience, state of the art manufacturing, full traceability and advanced quality controls, NewEnergy offers leading solid state lighting components, modules and custom solutions. NewEnergy customers get to market faster, with less resources, at lower costs. Visit [new-energyllc.com](http://new-energyllc.com) for more information.